

*Mathura*





# Why Us

## Location



Centrally located in fully developed commercial area of Dwaraka nagar in close proximity to following



Bus stand, Railway station



KFC, McDonald's, Starbucks, Sri Sairam Parlour, Kamat, Kritunga



Bank of India, City Union Bank, ICICI, Karur Vysya Bank



Pollocks School, Ravindra Bharati School, Sri Viswa Educational Academy,



AINU, Vijaya Diagnostic Center

## Design



Conceptualised as a fully commercial building with all necessary government approvals



Modern elevation with dedicated signage space on 3 sides for each unit



Ample parking space with first cellar dedicated to customers and second cellar, ground floor parking dedicated to owners and employees



Column and beam free space inside each unit



Best in class materials and processes to achieve superior quality



HT Power connection with 100% generator backup and voltage stabilisation



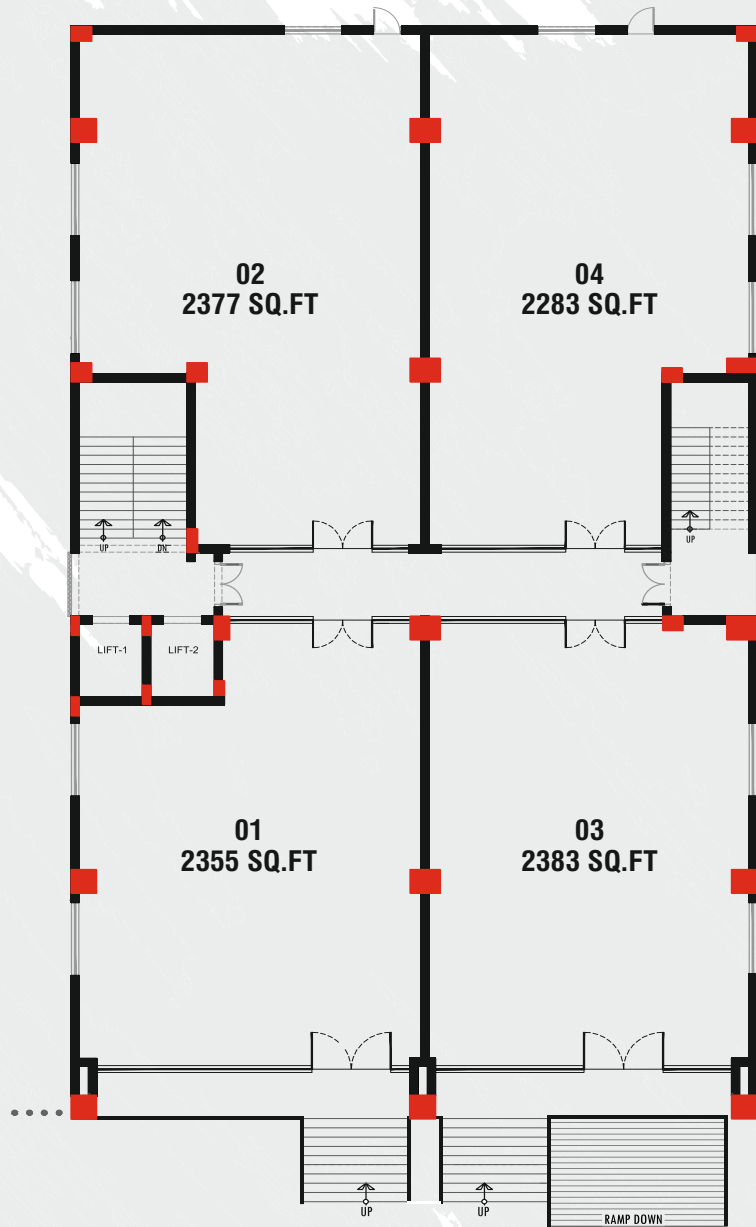
Bore and municipal water supply with sufficient storage capacity

Individual water connection with meter for each unit

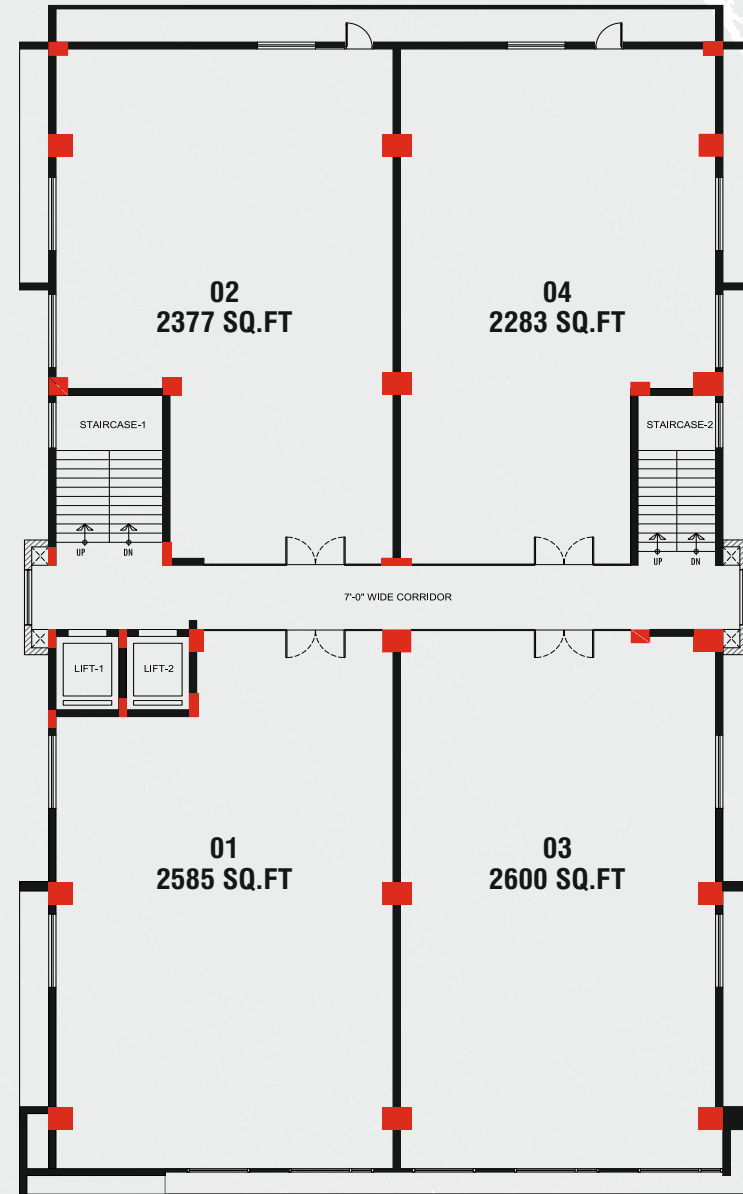


Dedicated control room to monitor the building

# Floor Plan



Ground Floor

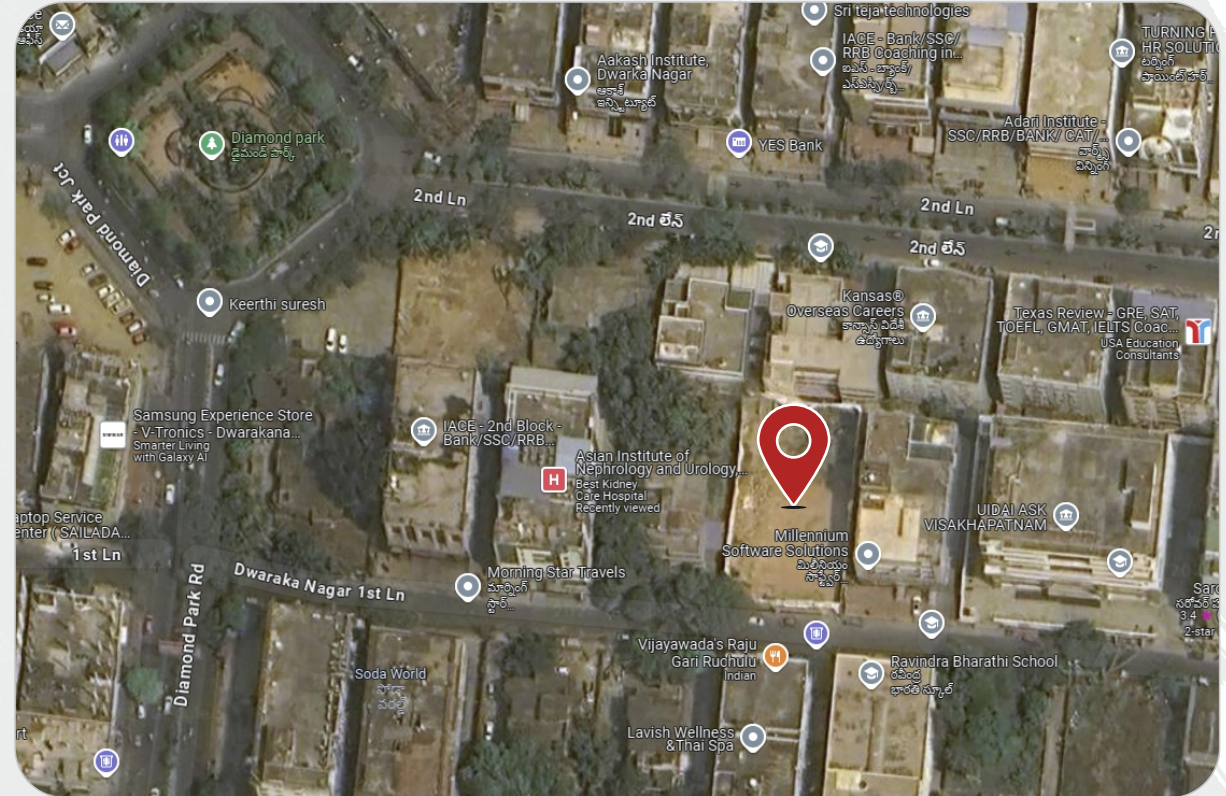


Typical Floor





# Reach Us



## Site Address:

47-11-14, Dwaraka Nagar Lane 1,  
Visakhapatnam - 530 016.

**Ph: 73370 36333**

